



Model 2620

# Stand-Assist Ergonomically designed to actively lift

Comfortable and secure sit-to-stand movement



SUREHANDS®



- Patented design combines movement of the lifting arm and handle to lift ergonomically
- Reduced pressure under the armpits for a more comfortable lift
- Arms remain next to the body, to easily pass through doorways
- Stable and secure in standing position
- Accommodates a broader group of people
- Compact and maneuverable in confined spaces
- Designed for frequent use in professional environment



Specialists in innovative and reliable lift & care systems

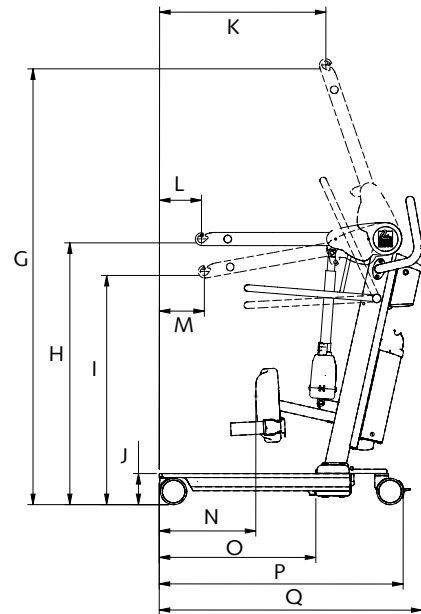
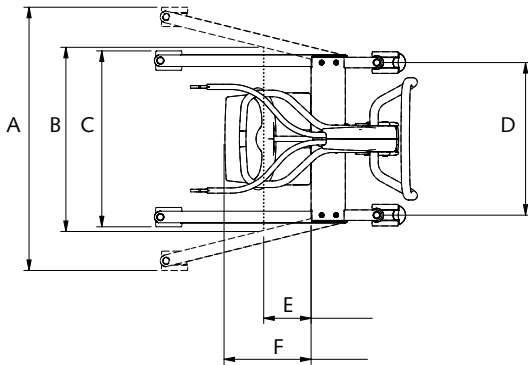
[www.surehands.com](http://www.surehands.com)

# Stand-Assist . Ergonomically designed to actively lift

## ● Dimensions

	mm	inch
A	1000	39.37
B	700	27.56
C	660	25.98
D	580	22.83
E	190	7.48
F	331	13.03

	mm	inch
G	1656	65.20
H	995	39.17
I	871	34.29
J	118	4.65
K	632	24.8
L	160	6.30
M	171	6.73
N	367	14.45
O	595	23.42
P	927	36.50
Q	1000	39.37

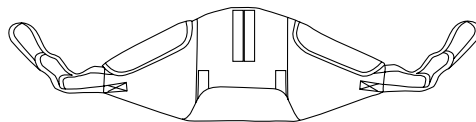
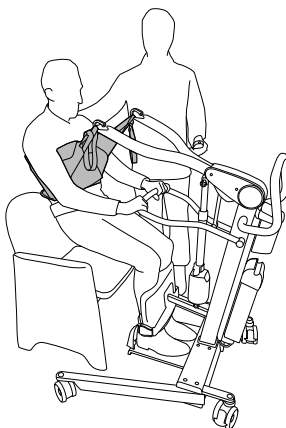


## ● Technical specifications

Construction..... Steel, aluminum; lacquered  
 Covers..... ABS  
 Weight..... 53.8 kg (118.61 lbs)  
 Motor up/down..... elektrisch 24 Vdc, 9 A  
 Weight battery pack..... 6.2 kg (13.67 lbs)  
 Max lifting capacity..... 180 kg (396,83 lbs)  
 Emergency stop switch..... available  
 Aluminum casters..... front ø 100 mm (3.94 inch)  
 ..... rear ø 100 mm with break  
 Opening/closing of U-shaped caster base.....electric 24 Vdc, 2,5 A  
 Emergency down..... Mechanical  
 Noise..... 50 dBA

Battery indicator..... Sound / visual  
 Batteries..... 2x12Vdc; 6.5 - 8 Ah  
 Charger - input..... 0.9 A 100 - 240 VAC  
 ..... 50 - 60 Hz, Class II  
 Charger - output:..... 24 Vdc  
 ..... Max 1.2 A  
 Number of lifting movements  
 when batteries are fully charged..... 160 at 90 kg (198 lbs)  
 Safety class..... IPx0  
 Charging time from signal..... 4 hours  
 Wall charger..... Optional  
 Extra battery pack..... Optional

## ● Active Sling



Lift & Care® is a registered trademark of  
 T.F. Herceg, Inc. dba SUREHANDS LIFT & CARE SYSTEMS.

© 31-05-2024 • Handi-Move • v1.3

Local Representative